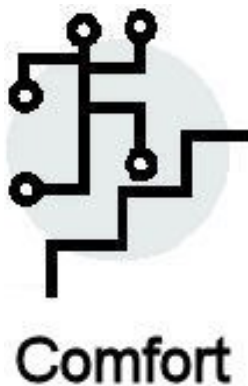


Basic Series

The orthopedic insoles of the Basic Series Offer great support with a plastic base and optional soft extrinsic post.

The semi-rigid shell can be reinforced using an arch fill under the plate with soft foam and keep some flexibility.

The soft extrinsic post is set to neutral position.



Legionorthopedics.com


Legion Orthopedics LLP

P.O. Box 451

Bridgeton NJ 08302 USA

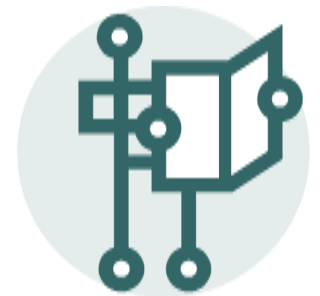
Tel:(856)4738927 Tel:(856)3925834
info@legionorthopedics.com

Authorized Distributor:



Legion Orthopedics

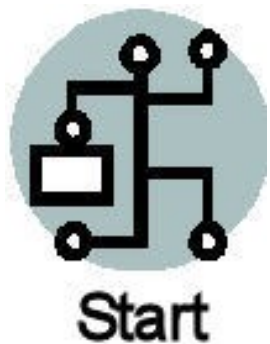
Orthopedic Insoles—Basic Series



**Black - Semi-White
NYLON**

**Shell - Base
measurements**

● ● ● | LEGION ORTHOPEDICS—Basic Series



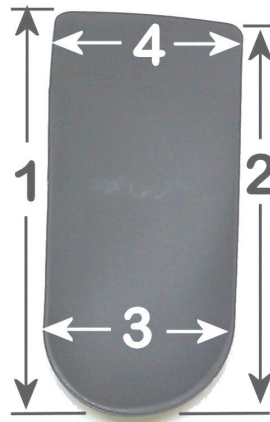
Use this chart to know the approximate measurements of the shell of the Basic Series Insoles

The final size and shell election should be approved by the doctor or foot care provider

Please note this are pre made foot orthotics made to an average arch foot, may not fit everybody. Please check our different series.

Use the next picture as reference

1. Arch side length (medial)
2. Lateral length
3. Heel width
4. Distal width



● ● ● | Shell - Base measurements / Sizes approximations

| LETTER | 1 Length* | 2 Length* | 3 Heel* | 4 Distal* |
|--------|--------------|--------------|------------|--------------|
| A | 15.4 | 14.8 | 6.0 | 6.5 |
| B | 15.7 | 15.0 | 6.0 | 6.5 |
| C | 15.9 | 15.2 | 6.4 | 6.8 |
| D | 16.1 | 15.4 | 6.5 | 7.0 |
| E | 16.4 | 15.8 | 6.5 | 7.2 |
| F | 16.9 | 16.5 | 6.7 | 7.4 |
| G | 17.3 | 16.7 | 6.7 | 7.6 |
| H | 17.6 | 16.8 | 6.9 | 7.8 |
| I | 17.9 | 17.2 | 7.0 | 7.8 |

*Measurements are in centimeters



Pic 1



Pic 2



Pic 3

Pic 1 represents recommended length (close to metatarsals heads)

Pic 2 The shell is a bit short

Pic 3 The shell is too long

Recommended Shoe Size (US)

| Letter | A | B | C | D | E | F | G | H | I |
|--------|---|---|---|---|----|----|----|----|----------|
| Man | 4 | 5 | 6 | 7 | 8 | 9 | 10 | 11 | 12 13 |
| Wom-an | 6 | 7 | 8 | 9 | 10 | 11 | 12 | 13 | 14 |

Note: this recommended sizes should be changed if necessary, adjusted accordingly to better fit the arch length of your patient's foot. Use the order form with the Basic Series Kit if available for better fitment.

Legion Orthopedics

P.O. Box 451

Bridgeton, NJ 08302 USA

Tel:(856)4738927 Tel:(85)3925834
info@legionorthopedics.com

Authorized Distributor: